

Request for Quotations

	Tender	Description	Quantity	Sample/Specs
1.	361-23	Provision of a contractor for painting services at TelOne ZITF stand		
2.	362-23	Provision of a contractor for Supply and Fix partitioning and shop fitting at Avondale shop <u>Mandatory requirements</u> 1. PRAZ registration in shop fitting category 2. At least three written references for similar works 3. Physical address for office/workshop		Mandatory site visit Venue: Avondale Exchange Date: 24 March 2023 Time: 1100hrs
3.	363-23	Borehole flushing at Southerton Exchange <u>Mandatory requirements</u> 1. At least three written references for similar works 2. Physical address for office/workshop 3. Proof of ownership of drilling rig		

- Bidders with outstanding orders for any of the above items will not be considered for supply
- TELONE RESERVES THE RIGHT TO INCREASE AND DECREASE QUANTITY
- Please note that **only** bidders registered with **Procurement Regulatory Authority of Zimbabwe (PRAZ) shall** be considered.
- **(Please attach Proof of PRAZ registration in the specified category)**
- **(Pricing MUST be strictly in ZWL unless requested otherwise or risk being automatically disqualified)**
- **Bidders should also be compliant with the new regulations for FISCAL TAX INVOICE where necessary.**

Closing date for ALL Tenders: On or before 1100hrs; Wednesday 29 March 2023

Your Tender should state the price (Please state your **VAT** status), a firm delivery date Emailed to procurement@telone.co.zw

Tel; 263 242 798111 Runhare House, 107 Kwame Nkrumah Avenue, Harare

RFQ350-23 PROVISION OF A CONTRACTOR FOR PAINTING SERVICES AT TELONE ZITF STAND

Item	Description	Unit	Qty	Rate	Amount
	<u>REFURBISHMENT OF ZITF PAVILLION</u>				
	BILL NO. 1				
	Note:				
	Bidders should note that the building is high rise structure and they should factor in the use of scaffolding in their pricing.				
	Fascia Board Repairs				

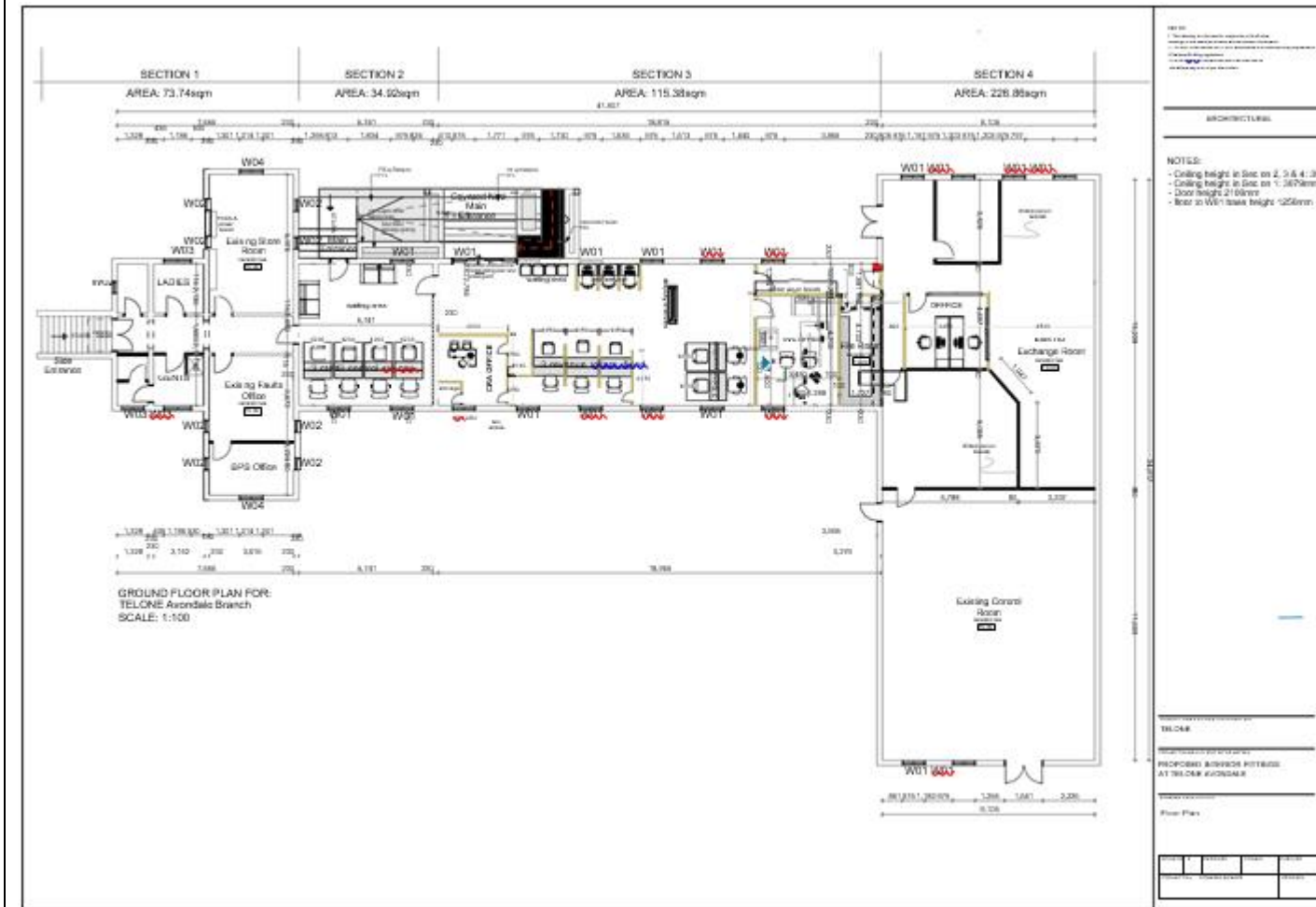
A	Remove and replace the existing 38 x 228mm fascial board including gutters for reinstallation, including painting and making good.	m	14		
B	Remove and replace the existing carpet with similar carpet tiles with appropriate carpet adhesive.	m2	15		
	PAINTING				
	On walls				
	Clean down, prepare and two coat PVA White on external wood float finished walls.				
C	External Walls	m2	270		
	Clean down, prepare and two coat PVA White on internal steel float finished walls.				
D	Internal Walls	m2	65		
	Clean down, prepare and two coats brick dressing on face brick				
E	External Walls (Labour Only)	m2	40		
F	Internal Walls (Labour Only)	m2	180		
G	On floors (Labour Only)	m2	80		
	Clean down, prepare and apply one floorcoat on pavers				
H	On Floors	m2	40		
	Clean down, prepare and apply one coat gloss on steel frames				
I	On steel frames	m2	70		
J	Touch up and clean paintwork requiring it, scrub floor and clean down glass and clean paintwork requiring it, scrub floor and clean down glass and leave premises and site properly clean and the whole complete and ready for occupation	Item	1		
	Sub - Total				
	Add: VAT				
	TOTAL AMOUNT				

RFQ351-23 PROVISION OF A CONTRACTOR FOR SUPPLY AND FIX PARTITIONING AND SHOP FITTING AT AVONDALE SHOP

	SUPPLY AND FIX		
	DEMOLITIONS		
A	Carefully remove existing electrical installations that include lights, switches, etc. as directed by the Electrical Engineer and hand over to the client.	Item	1
B	Carefully remove existing dry wall and aluminium and glass partition and cart away	m2	56
C	Remove steel windows from brick walls and make good to receive new windows	m2	4
D	Remove worn out, sagging ceiling boards and damaged bandering	m2	40
	SHOPFRONT		
E	Aluminium double door incorporating locking system and heavy-duty door closers glazed with 10mm laminated glass shadowlite 25 glass. Size : 3000 mm (w) x 2100mm (h) hinged	ITEM	1
	JOINERY & IRONMONGERY		
F	Supply and fix bison ceiling boards, coverstrips and bandering	m2	40
G	Install new pine cornice 19 x 76 mm to the ceiling, painting it white.	m	24

H	Repaint entire ceiling with undercoat and 2 coats ceiling white Dulux or Astra paint	m2	154
	BULKHEADS		
I	Supply and fix bulkhead above teller counters including recessed lighting , LED colour string light round the bulkhead	No.	1
J	Supply and fix bulkhead above self service counters including recessed lighting , LED colour string light round the bulkhead	No.	1
	SHOPFITTING		
	PARTITIONS		
K	Erect CRA office , HIEGHT 2100MM of high gloss melamine board partition to the bottom (1000mm height) laminated glass partition 1100mm high with 2 hinged aluminium glass doors complete with locking system and heavy duty normal door closers. Partition to be of natural aluminium framing. The office to be of 2 sides with (front x 1 and sides x 1) and fitted to an existing solid brick wall. office size 3000x 3000mm	m2	12.6
L	Erect HVC office , HIEGHT 2100MM high glass partition of 8mm safety glass with 1 hinged aluminium and glass door complete with locking system and heavy duty normal door closer. Partition to be of natural aluminium framing. The office to be of 2 sides with (front x 1 and sides x 1) and fitted to an existing partition. office size 3500mm x 4700mm	m2	17.22
M	Erect Exchange office , HIEGHT 2100MM of high gloss melamine board partition to the bottom (1000mm height) glass partition 1100mm high with 1 aluminium and glass doors complete with locking system and heavy duty normal door closers. Partition to be of natural aluminium framing . The office to be of 3 sides with (front x 1 and sides x 2) and fitted to an existing partition. office size 3000mm x 3500mm	m2	19.95
N	Erect partition between HVC OFFICE and front wall with 2100mm high glass partition	m2	2.52
	of 8mm safety glass with 1 hinged aluminium and glass door complete with locking system and heavy duty normal door closer. Partition to be of natural aluminium framing.		
O	supply and fix heavy duty normal door closers to already existing aluminium doors	No.	3
P	supply and fix locks to already existing aluminium doors	No	3
	COUNTERS		
Q	3x teller (cash) counter, 1350mm x 1100mm of high gloss melamine boards. All counters to have black granite with 1 x cable hole 40-50mm diameter on each top. Teller counters to have 3 drawers lockable unit with bottom file compartment. The top drawer to have note divider. The 3 teller counters to have lockable back doors and dividers between the counters to be of glass framed in natural anodised aluminium and height 300mm. LED string lighting under the counter top.	No.	3
R	Erect half partition between CRA Office and cash counters and entrance of cash counters with 1400mm of high gloss melamine board partition to the bottom (1100mm height) laminated glass partition 300mm to incorporate lockable door of height 1400mm and standard width	m2	3.2
	ELECTRICITY		
S	Electricity supply to counters including trunking and double sockets at each counter	Item	1
	DISPLAY UNITS		
T	Aluminium and glass gadget display unit measuring 2400 mm wide x 1600mm high complete display lighting and light box.	No.	1
	ALUMINIUM WINDOWS		
	Bronze anodised aluminium , glazed with 4mm shadowlite 25 glass		
U	TP0509, 500X900mm high	No.	4
V	TP1012, 1000X1200mm high	No.	1
W	TP0912, 1000X 2200mm high	No.	1
X	Paint all existing window frames and screen on exchange to bronze shade matching aluminium frames	no.	5
	PLASTERING AND PAVING		
	FLOOR TILES		
Y	lay porcelain floor tiling (white glazed) including grouting	m2	6
	PAINTING (all paints should be either Astra or dulux)		

	ON METAL		
Z	Clean down, touch up one coat high gloss enamel paint on		
AA	Pressed steel doorframes.	m2	7
	ON TIMBER		
AB	Clean down, touch up one coat high gloss enamel paint on		
AC	Wooden door surfaces	m2	7
	ON BRICKWALL		
AD	Apply one coat PVA solid paint to already painted old walls	m2	245
AE	Apply two coats of PVA walls to external reveals as narrow widths	m2	12
AF	Apply two coats of PVA walls to internal reveals as narrow widths	m2	12



RFQ352-23 PROVISION OF A CONTRACTOR FOR BOREHOLE FLASHING

ITEM	DESCRIPTION	UNIT	QUANTITY
1	Flushing of borehole with 60m shaft using high-pressure water injection procedures with advanced air compressors and flushing tools.	ea	1